



IDEAL WAREHOUSE
INNOVATIONS INC[®]

Protecting Your People

DOCK LIGHTS



SEEING IS PREVENTING

Shine a light on safety
in the loading dock

SOMETIMES, SAFETY IS SIMPLE.

In busy loading docks and warehouses, where lighting can be poor or inconsistent, risk is literally hiding in the shadows. And, while the solution may be obvious, the rugged and flexible dock-lighting options we have available offer many ways to brighten the path to a safer workplace.

Our loading dock lighting solutions increase worker safety and efficiency while also looking out for themselves. Built tough, our impact-resistant lights are prepared for the occasional forklift bump and other realities of life on the loading dock. Our lineup includes standard and LED options, flexible arm-mounted choices, arms with Integrated LEDs, explosion-proof LED heads for volatile environments, and our Heavy-Duty LED workhorses available in both standalone and arm-mounted configurations.

Our product lineup includes North America's most popular dock lighting systems, and most are in stock and ready-to-ship! See all the ways we can help you shine a little light on safety.



THE BRIGHTER THE BETTER...

LED VS INCANDESCENT BULBS

In the modern loading dock, the development of LED lighting options has done more than just brighten dark corners. LED solutions offer advantages in energy savings, economy, flexibility, and durability over outdated incandescent options.



Breaking news

In the path of loading dock traffic, incandescent bulbs can shatter at the slightest tap. LED bulbs are built to take a hit and are virtually unaffected by impacts from dock equipment.



Hot... or not?

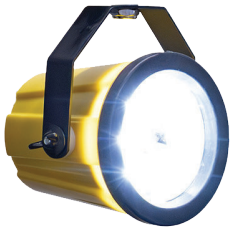
Wire guards, a fire-safety requirement with hot-burning incandescent bulbs, are not needed with always cool to the touch LED solutions.

LED MODULE VS SINGLE LED BULB

LED Modules provide enhanced reliability.

Though even a single LED emitter (or bulb) will likely outlast 25 incandescent bulbs, if/when one does fail, a single-bulb solution leaves you in a darkened dock. If a single emitter in an LED Module fails, in most cases, the other emitters will continue to operate, avoiding any downtime.

In the event of an LED PCB (board) failure, a technician can often replace the board rather than replacing the entire module.



LED modules deliver flexible illumination.

An LED Module with multiple emitters offers significant advantages over any single bulb system. With control over the optics of individual bulbs, LED Modules offer flexible illumination, beam width, and light intensity options that neither single LED or incandescent bulbs can match.

DOCK LIGHT OPTIONS

VISIT OUR WEBSITE
For our full selection
of dock lights and
dock light accessories



FLEXIBLE DOCK LIGHTS

Our Flexible Dock Lights are equipped with long bendable necks that not only allow the lights to be easily positioned for optimal visibility, but the flexible neck can also absorb a forklift or dock door impact by simply getting pushed aside. Energy-efficient LED and other lighting options are available.

DOCK LIGHT OPTIONS

INTEGRATED LED DOCK LIGHT ARMS

Our Integrated LED Dock Light Arms eliminate the need for bulky head attachments, outputting over 1300 lumens while drawing a mere 13.4 watts. The new curved arm design is more compact and more easily fits around dock doors. These arms can be mounted higher than any other dock light for additional vertical clearance and feature both a bump stop and safety bump for extra protection of personnel and equipment.



HEAVY-DUTY LED DOCK LIGHTS

Our Heavy-Duty LED Dock Lights are built from cast aluminum to create robust, compact lighting solutions. Not only can these lights take a hit, but they are green, energy-efficient choices, using up to 94% less energy than incandescent options while lasting 25 times as long! Our Heavy-Duty LED Dock Lights are covered with extended warranties. These lights are available with arms and/or mountable fans.



STANDARD LED DOCK LIGHTS

Our Standard LED Dock Lights are energy-efficient options that can light up any environment. The LED systems use about 80% less energy than incandescent bulbs.

While converting most of their energy to light and very little to heat, the sturdy, polycarbonate heads remain cool to the touch, while the LED's reach maximum illumination instantly. Standard LED Dock Light Assembly includes polycarbonate head and LED module or PAR38 LED bulb.

Options include PAR38 LED bulb or LED module. Available with arms and/or mountable fans.

STANDARD DOCK LIGHTS

Our lineup of standard dock lights offers economical solutions suitable for almost any warehouse illumination need. The rugged polycarbonate heads are about half the weight of our metal options, and are still able to withstand loading dock impacts and high heat build-up of conventional dock lights. A supplied wire guard can be attached for additional bulb protection.

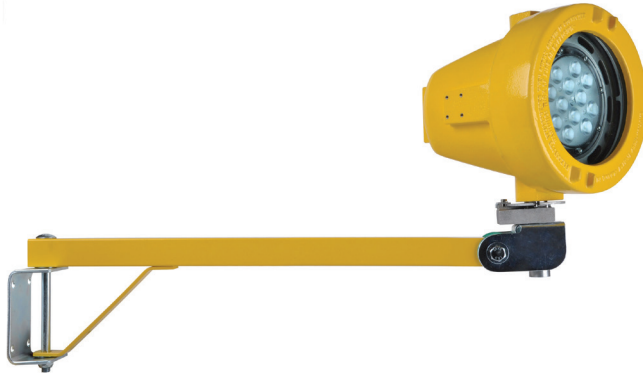
Available with arms and/or mountable fans.



DOCK LIGHTS

EXTREME-CONDITION DOCK LIGHTS

Our extreme-condition lighting options offer excellent choices for wet or volatile environments where standard lighting options can create hazard. Water-resistant, corrosion resistant, and explosion-proof options are ideal for use in chemical plants, refineries, and hazardous or volatile environments. The LED system is energy efficient and long-lasting, significantly reducing replacement and maintenance costs.



OPTIONAL FANS

Mountable fans are available with many of our dock light products. Fans can be purchased separately or as part of a light/fan/arm assembly.



MORE SAFETY SOLUTIONS



Forklift Safety Products



Loading Dock Bumpers



Wheel Chock Safety Systems



Trailer Stands



**IDEAL WAREHOUSE
INNOVATIONS INC.**
Protecting Your People

Toll-Free Phone: **1-866-828-6737**
Toll-Free Fax: **1-844-899-0088**

IdealWarehouse.com
info@idealwarehouse.com

Many Ideal Warehouse Innovations Inc Safety Products are trademarked and covered by U.S. or international patents. Products may change without prior notice. Form [DockLight-EN-HI-IW-L-202311]