

Product intended to prevent trailer up-ending and tip-over by shouldering the weight in heavy-duty loading dock environments.

AutoStand Wide Trailer Stand Operation Manual

Original Instructions

Important notes

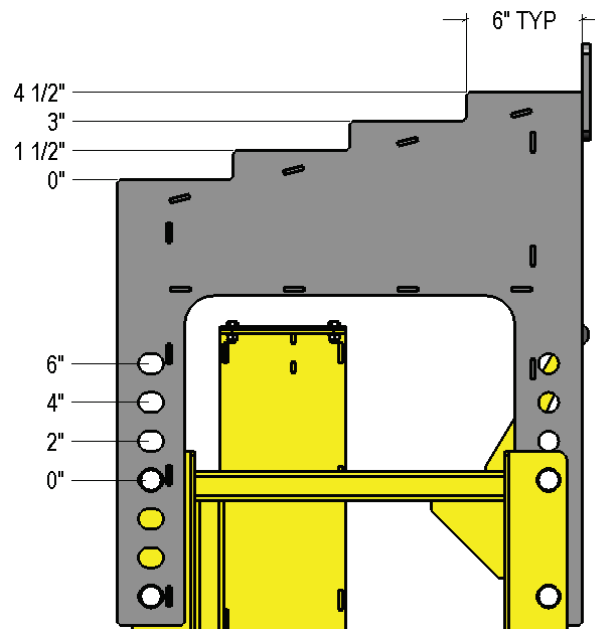
- Only trained and authorized individuals should use this product.
- Use only original Ideal Warehouse Innovations, Inc. parts to service this product.
- Do not maneuver on steep surfaces; use only on stable, flat surfaces.

Before you begin

- Complete a visual inspection of the AutoStand Wide for any obvious maintenance issues.
- Be careful moving around the loading dock area to ensure it is safe to move around the area.
- Use appropriate personal protective equipment such as gloves, safety glasses, safety vest, hearing protection and protective shoes.

Set up

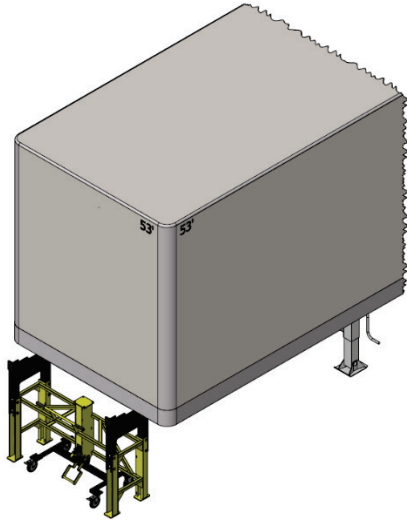
- The AutoStand Wide's versatility lies in its ability to accommodate a vast range of trailer sizes. This is due to two features:
 1. Step feature (top).
 2. Adjustable height via clevis pin (bottom).



- With the AutoStand Wide in locked position, the lowest height possible, on the lowest step is 42"; and the maximum height possible on the highest step is 52 1/2".
- Adjust the height of the AutoStand Wide using the clevis pin as needed, with the intent of keeping it in this position, using the steps as the variable height options for your daily trailer variations.

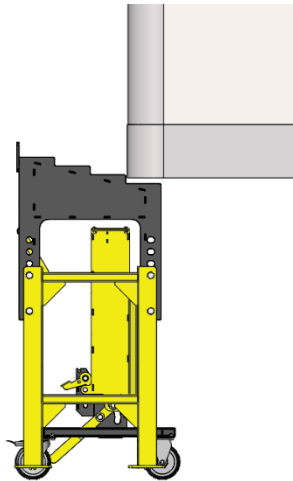


Operation



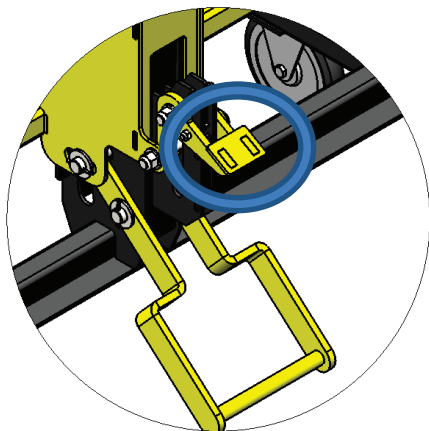
Step 1:

Using the handles, position the AutoStand Wide under the nose of trailer, ensuring the stand is positioned approximately in the center of the trailer.



Step 2:

Push the AutoStand Wide under the nose of the trailer until one of the “steps” catches the trailer. This determines which “step” on the unit will support the load. Pull unit back slightly to allow clearance.



Step 3:

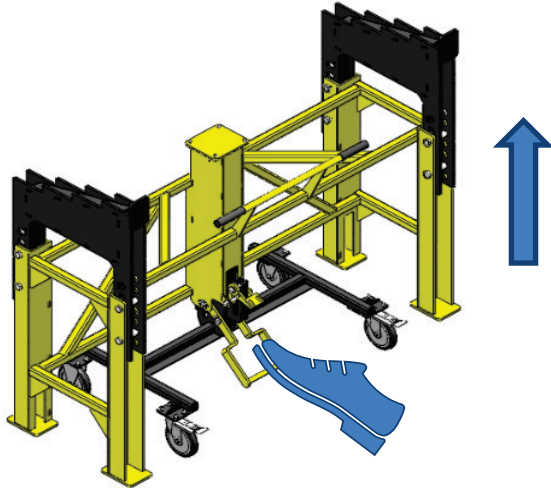
Press the release latch with your foot to lower the frame off the wheels and onto the ground. The AutoStand Wide is now locked in place.



Critical safety tip:

When pressing the release latch, the unit will drop onto the ground instantly. **MAKE SURE** there is nothing under the frame base plates beforehand as the unit possess considerable weight.

Removing the AutoStand Wide Trailer Stand



Step 4:

Press firmly on the foot pedal with your foot to raise the unit off the ground and onto its wheels. Keep pressing until the latch is engaged, locking the unit in its mobile position.

Use the brakes on the back wheels when storing unit in its mobile position.

Once removed, store the unit out of the way of dock traffic and complete a visual inspection to ensure there are no obvious maintenance issues.

Warranty Statement

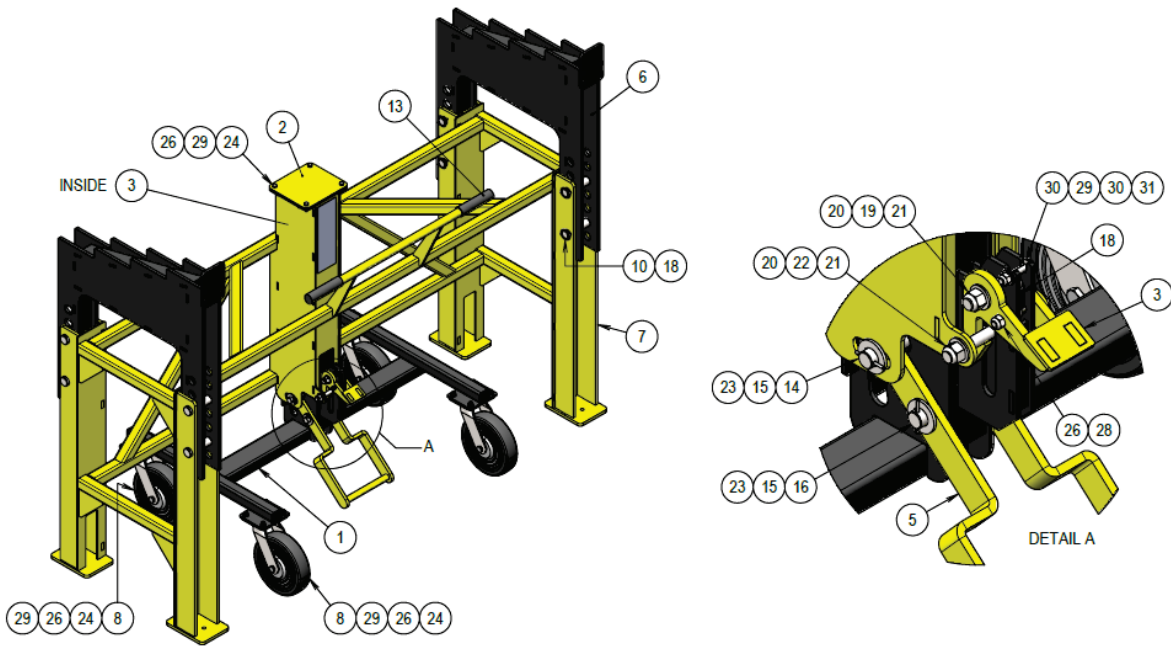
Ideal Warehouse Innovations, Inc. warrants for a period of three hundred and sixty-five (365) days from date of installation, or three hundred and seventy-five (375) days from date of shipment, whichever shall occur first, that all products and service parts shall be free from defects in workmanship and material. If the equipment or any part thereof, is returned, transportation charges pre-paid, within the periods specified above, and if examination by Ideal Warehouse Innovations, Inc. discloses to its satisfaction that the said equipment or part thereof has been defective in workmanship or material, it will deliver to the purchaser, without charge, parts of the first class workmanship and material in exchange for any parts so found to be defective, and Ideal Warehouse Innovations, Inc. is limited to said exchange.

This warranty shall not apply: (1) to maintenance service or adjustment; and (2) to any equipment which shall have been repaired or altered outside of Ideal Warehouse Innovations, Inc. or its authorized service representatives.

These warranties are in lieu of all other warranties, expressed or implied, including, without limitation, warranties of merchantability and fitness for purpose, all other representations to the first user purchaser, and all other obligations or liabilities, including liability or incidental and consequential damages, on the part of Ideal Warehouse Innovations, Inc. No person is authorized to give any other warranties or to assume any other liability on behalf of Ideal Warehouse Innovations, Inc. unless made or assumed in writing by Ideal Warehouse Innovations, Inc.

AutoStand Wide Trailer Stand Parts Listing

KEY	PART NUMBER	DESCRIPTION	QTY.		
1	Not Available	BASE FRAME WELDMENT	1		
2	60-5445-100	COVER PLATE	1		
3	60-5445-101	RELEASE LATCH	1		
4	60-6445-102	SLIDE FRAME	1		
5	60-5445-103	FOOT PEDAL	1		
6	60-5445-104	STEPPED CAP	2		
7	Not Available	BASE FRAME	1		
8	60-5445-1	8" SWIVEL CASTOR	4		
9	60-5445-200	GAS SPRING, 150lbs	1		
10	60-5445-203	LINCH PIN, 3/16"OD x 1"	8		
11	60-5445-204	COTTER PIN, 1/8"DIA x 1.25"LG	2		
12	60-5445-201	EXTENSION SPRING, 1/2"OD x 1.75"LG	1		
13	60-5445-205	ROUND GRIP FOR 1"OD, 5-1/16"LG	2		
14	60-5445-202	SKATE WHEEL; STEEL, 2.25"OD x 13/16" WIDE	8		
60-5445-206	Full Set of Hardware for Auto Stand Wide (Includes all below parts & quantities)		1		
KEY	DESCRIPTION	QTY	KEY	DESCRIPTION	QTY
15	UHMW WASHER, 1.312"OD x 0.736"ID x 0.065"	2	24	HEX BOLT, 5/16 UNC x 7/8; FULL-THD, Gr5, ZP	20
16	CLEVIS PIN; 3/4"OD x 3-3/4"	1	25	LOCKNUT, 1/4 UNC; Gr5, ZP	2
17	CLEVIS PIN, 3/4"OD x 4.75"LG, ZP	1	26	LOCKNUT, 5/16 UNC; Gr5, ZP	26
18	CLEVIS PIN, 1"OD x 4 3/16"LG, ZP	8	27	LOCKNUT, 1/2 UNC; Gr5, ZP	2
19	HEX BOLT, 1/4 UNC x 1 1/2; Gr5, ZP	1	28	WASHER, FLAT, 1/4"; ZP	2
20	HEX BOLT, 1/4 UNC x 2 1/4; Gr5, ZP	1	29	WASHER, FLAT, 5/16"; ZP	28
21	HEX BOLT, 5/16 UNC x 3; Gr5, ZP	4	30	WASHER, FLAT, 1/2"; ZP	3
22	HEX BOLT, 1/2 UNC x 2 3/4; Gr5, ZP	1	31	WASHER, FLAT, 3/4"; ZP	4
23	HEX BOLT, 1/2 UNC x 5; Gr5, ZP	1			



Recommended Safety Inspection and Maintenance Schedule

Inspect for	Action
Before each use:	
A visual check should be performed before each use.	Check for any bent parts and broken welds. Make sure the release latch is functioning and the clevis pins (item no. 10) used for height adjustments are secure.
Monthly:	
Up and down function. Should lower automatically when release latch is pressed and raise by pushing on the foot pedal.	<ol style="list-style-type: none"> 1. Raise and lower unit. 2. If smooth functioning is compromised, check the release latch and any corresponding springs and fasteners. 3. Clean parts if needed. 4. Tighten fasteners if needed. 5. Replace springs, fasteners or other parts if necessary.
Yearly:	
Inspect for bent, damaged or missing handlebars, fasteners, grips, castors, springs, labels, etc.	<ol style="list-style-type: none"> 1. Check to ensure all moving parts operate smoothly. 2. Clean labels so instructions are clear and visible. 3. Replace or repair if necessary.